

SERIES 20

MODEL

203AU1 / 203AJ1 / 203AD1  
203AU2 / 203AJ2 / 203AD2

2-Piece Ball Valve  
Flanged



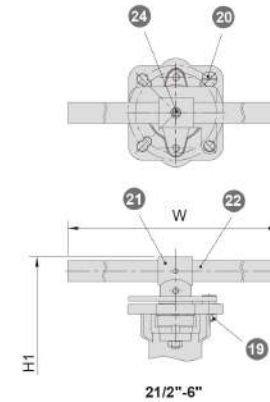
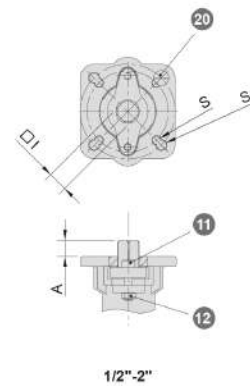
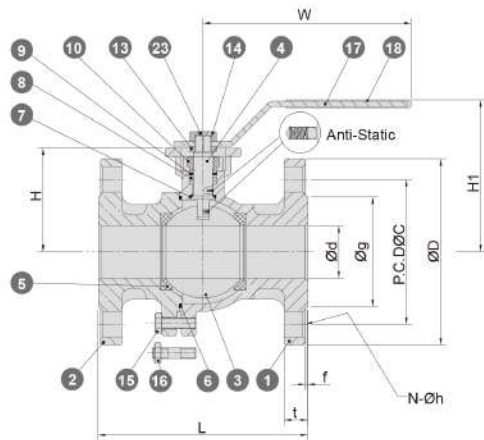
<b>Pressure Rating</b>	ANSI Class 150, JIS 10K, DIN PN16 (2 1/2"-6") ANSI Class 300, JIS 20K, DIN PN40
<b>Material</b>	203AU: ASTM A351 CF8, CF8M, A216-WCB 203AJ: JIS G5121 SCS13A, 14A, SCPH2 203AD: EN10213 1.4308, 1.4408, 1.0619
<b>Seat</b>	TFM1600, 25%, 50%
<b>Bore Type</b>	Full bore
<b>Additional Features</b>	<ul style="list-style-type: none"> <li>Patent product</li> <li>Blow-out proof stem</li> <li>Anti-static device (Ball-stem-body)</li> <li>Tightenable gland to stop leakage</li> <li>ISO 5211 direct mounting pad</li> <li>API607 Fire safe approved (Optional)</li> </ul>

DESIGN AND TESTING SPECIFICATIONS

	203AU1 / 203AU2	203AJ1 / 203AJ2	203AD1 / 203AD2
RATING	ASME B16.34	JIS B2220	EN12516-2
FACE TO FACE	ASME B16.10	JIS B2002	EN558-1
CONNECTION	ASME B16.5	JIS B2220	EN1092-1
PRESSURE TEST	API598	JIS B2003	EN12266-1

MATERIALS LIST

NO	PART NAME	Q'TY	MATERIAL
1	BODY	1	CF8 / CF8M / WCB
2	END CAP	1	CF8 / CF8M / WCB
3	BALL	1	CF8 / CF8M
4	STEM	1	SUS316
5	SEAT	2	TFM1600
6	PACKING	1	PTFE
7	STEM SEAL	1	R.PTFE
8	V-RING PACKING	1SET	PTFE
9	BUSHING	1	50%SS / 50%PTFE
10	GLAND	1	SUS304
11	BOLT	2	SUS304
12	NUT	2	SUS304
13	HANDLE WASHER(1/2"-2")	1	SUS304
14	STEM WASHER(1/2"-2")	1	SUS304
15	BOLT(1/2"-2")&STUD(2 1/2"-6")	4-8	SUS304
16	NUT(1/2"-6")	6-8	SUS304
17	HANDLE(1/2"-2")	1	SUS304
18	HANDLE SLEEVE(1/2"-2")	1	VINYL
19	STOP PIN NUT	1	SUS304
20	STOP PIN	1	SUS304
21	HANDLE ADAPTOR(2 1/2"-6")	1	CF8
22	PIPE HANDLE(2 1/2"-6")	1	SUS304
23	HANDLE BOLT(1/2"-2")	1	SUS304
24	HANDLE BOLT(2 1/2"-6")	1	SUS304



DIMENSIONS (mm)

MODEL SIZE	203AU1 / 203AJ1 / 203AD1																	
	A	W	H	H1	D1	L	Ød	Øg	ØC	ØD	t	f	Øh	N	S	Ø1	ISO 5211	
1/2"	10K	8	128	50.5	79.5	9	108	15	51	70	95	12.5	1	15	4	M5/5.5	M5/5.5	F03 F04
150LB	10K	8	128	53.8	82.8	9	117	20	56	75	100	14.5	1	15	4	M5/5.5	M5/5.5	F03 F04
3/4"	10K	9.5	167	64.5	98.5	11	127	25	60.8	79.4	108	11.5	1.6	16	4	M5/5.5	M6/6.5	F04 F05
150LB	10K	9.5	167	70	102	11	140	32	64	88.9	117	13.5	1.6	16	4	M5/5.5	M6/6.5	F04 F05
11/4"	10K	14	215	77	110	14	165	40	81	105	140	16.5	2	19	4	M6/6.5	M8/8.5	F05 F07
150LB	10K	14	215	85.3	118	14	178	50	96	120	155	16.5	2	19	4	M6/6.5	M8/8.5	F05 F07
2"	10K	17	495	111.5	172	17	190	65	122	145	185	17.6	2.6	18	4	M8/9	M10/11	F07 F10
150LB	10K	17	495	120.5	181	17	203	80	126	150	185	19	2	19	8	M8/9	M10/11	F07 F10
3"	10K	22	595	145	206	22	229	100	156.5	180	220	20	3	18	4	M10/11	-	F10
150LB	10K	22	595	155	215	22	242	110	162	190	230	21	3	18	4	M10/11	-	F10
4"	10K	27	600	178.5	250	27	325	125	186.3	210	250	22	3	18	8	M12/13	M16/17	F12 F14
150LB	10K	27	600	186	267	27	350	150	210.8	240	285	22	3	22	8	M12/13	M16/17	F12 F14
6"	10K	39.4	215.9	241.3	279	39.4	400	200	241.3	279	328.6	23.9	1.6	19	8	M12/13	M16/17	F12 F14
150LB	10K	39.4	215.9	241.3	279	39.4	400	200	241.3	279	328.6	23.9	1.6	19	8	M12/13	M16/17	F12 F14

L Dimensions For PN16: DIN3202 F1 (1/2"-4"), F5 (5"-6")

DIMENSIONS (mm)

MODEL SIZE	203AU2 / 203AJ2 / 203AD2																	
	A	W	H	H1	D1	L	Ød	Øg	ØC	ØD	t	f	Øh	N	S	Ø1	ISO 5211	
1/2"	20K	8	130	50.5	79.5	9	140	15	51	70	95	14	1	15	4	M5/5.5	M5/5.5	F03 F04
150LB	20K	8	130	53.8	82.8	9	152	20	56	75	100	16	1	15	4	M5/5.5	M5/5.5	F03 F04
3/4"	20K	9.5	168	64.5	98.5	11	152	25	60.8	79.4	108	11.5	1.6	19	4	M5/5.5	M6/6.5	F04 F05
150LB	20K	9.5	168	70	102	11	165	32	64	88.9	117	13.5	1.6	19	4	M5/5.5	M6/6.5	F04 F05
1"	20K	14	217	77	110	14	190	40	81	105	140	16.5	2	19	4	M6/6.5	M8/8.5	F05 F07
150LB	20K	14	217	85.3	118	14	203	50	86	110	150	18	3	18	4	M6/6.5	M8/8.5	F05 F07
2"	20K	17	495	111.5	172	17	216	65	122	145	185	17.6	2.6	18	4	M8/9	M10/11	F07 F10
150LB	20K	17	495	120.5	181	17	233	80	126	150	185	19	2	19	8	M8/9	M10/11	F07 F10
3"	20K	22	595	145	206	22	242	100	156.5	180	220	20	3	18	4	M10/11	-	F10
150LB	20K	22	595	155	215	22	255	110	162	190	230	21	3	18	4	M10/11	-	F10
4"	20K	27	600	178.5	250	27	325	125	186.3	210	250	22	3	18	8	M12/13	M16/17	F12 F14
150LB	20K	27	600	186	267	27	350	150	210.8	240	285	22	3	22	8	M12/13	M16/17	F12 F14
6"	20K	39.4	215.9	241.3	279	39.4	400	200	241.3	279	328.6	23.9	1.6	19	8	M12/13	M16/17	F12 F14
150LB	20K	39.4	215.9	241.3	279	39.4	400	200	241.3	279	328.6	23.9	1.6	19	8	M12/13	M16/17	F12 F14

L Dimensions For PN40: DIN3202 F1 (1/2"-4"), F5 (5"-6")

SERIES 10  
SERIES 20  
SERIES 30  
SERIES 70  
SERIES 85  
SERIES 90  
SERIES 95  
SERIES  
MPV / MP  
OTHER VALVES  
VALVE PARTS  
PRESSURE  
TEMPERATURE  
RATINGS